

[Home](#) ■ [Solutions](#) ■ [Traitement des boues](#)

## Les solutions HUBER pour le traitement des boues

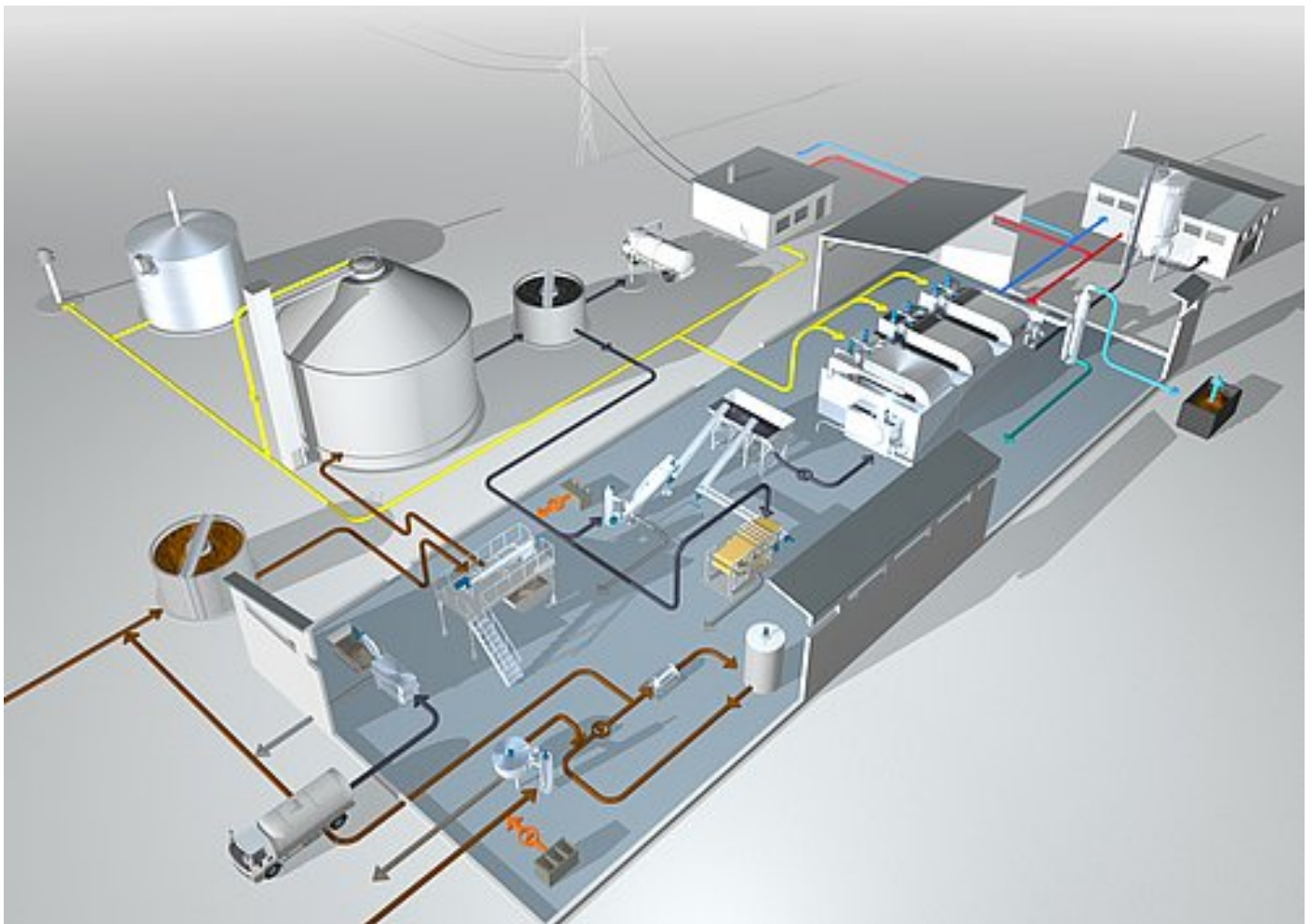
The better wastewater is treated, the more sludge is generated thereby. Primary sludge consists of solids removed from raw wastewater. Secondary sludge consists of biomass generated by biological treatment. Tertiary sludge is generated by advanced chemical/physical treatment.

Most important processes of sludge treatment include:

- **Screening** for removal of debris and other solids
- **Thickening** by concentrating solids
- **Disinfection** for destruction or inactivation of pathogens
- **Dewatering** by mechanical water removal
- **Drying** by thermal water removal (evaporation)
- Incineration by oxidation of organic solids

We offer efficient HUBER Solutions for sludge treatment, from mechanical pre-treatment with screens to sludge reuse.

## Systems concept



*Click on the image to get a detailed, interactive view with additional information and links.*

## Details

The main waste generated in a municipal waste water treatment plant is the wastewater sludge that is removed from mechanical,

biological and chemical wastewater treatment processed.

The amount of sludge depends on the type of treatment, the connected population and population equivalents, and wastewater characteristics. Wastewater characteristics and specific sludge production vary from country to country and from region to region. There is even a difference between urban and rural areas. Sludge production figures range from 20 to 45 kg of dried solids per person per year.

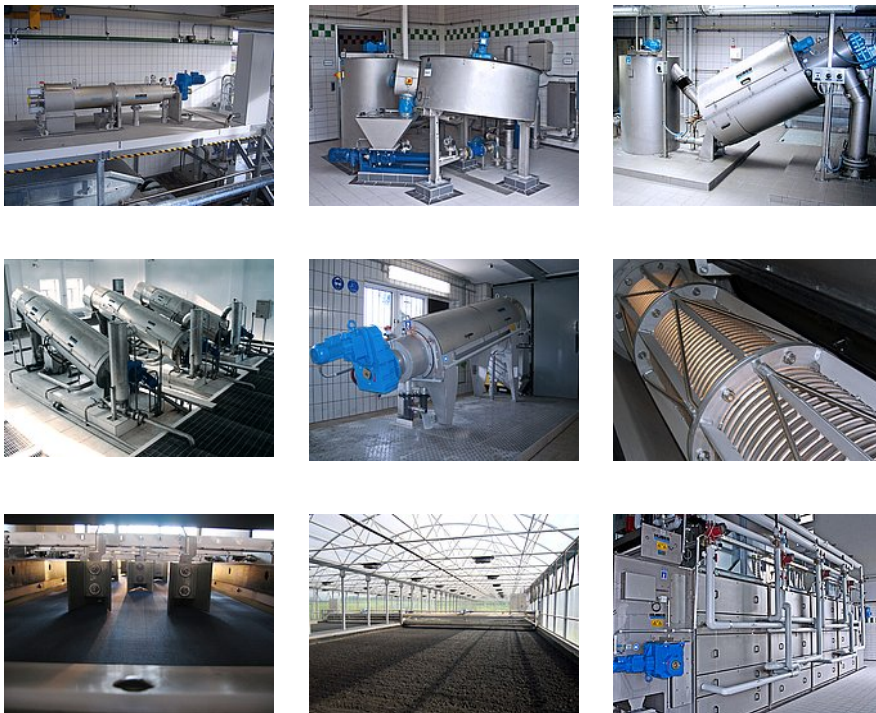
There are several sludge characteristics that have a great influence on the costs of sludge treatment. The water content is very important as it determines the sludge volume and therefore feasibility and costs of transportation and disposal. The solids and water content of sludge depends on the type of sludge (e.g. primary sludge, waste activated sludge, chemical sludge) and the type and quality of its treatment (e.g. sludge digestion) and on the method of sludge thickening and dewatering.

The chemical composition of the sludge also depends on wastewater characteristics and the wastewater treatment method. Of particular importance is the content of heavy metals as their concentration is a limiting factor for land application of biosolids. Despite the fact that land application within the limits set by European biosolids regulation is not only a safe and beneficial reuse of valuable nutrients, there are politically motivated concerns endangering the long-term continuation of land application. The existence of endocrine substances in biosolids is also an additional concern though these pharmaceutical substances are unlikely to be taken up and incorporated into plants.

European regulations specify that only waste with a volatile solids (organic) content of below 5% may be landfilled. This means the end of the sludge landfilling only the ash from sludge incineration plants may be landfilled. The combination of sludge drying and incineration is about energy neutral. Dried sludge has approximately the same thermal value as brown coal. If dried sludge is incinerated, the generated heat is sufficient for sludge drying.

HUBER offers a virtually complete chain of sludge treatment processes.

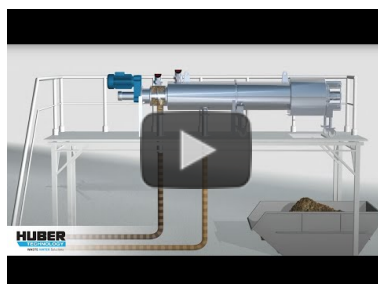
### Photos



### Videos



Animation: HUBER Sludge Dewatering  
<https://www.youtube.com/watch?>



Animation: Function and components of STRAINPRESS® Sludgecleaner SP



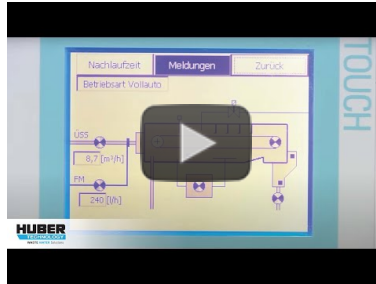
Video: HUBER Screw Thickener S-DRUM - here at a municipal WWTP  
<https://www.youtube.com/watch?>

<https://www.youtube.com/watch?v=Tb2OoBr7PEs>

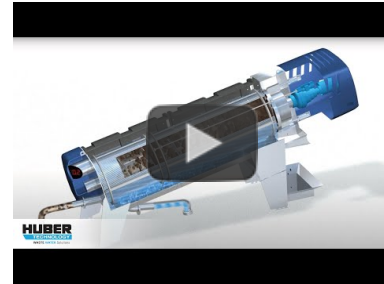
[v=uxjMve6yi50](https://www.youtube.com/watch?v=uxjMve6yi50)



Video: HUBER Disc Thickener S-DISC - here at a municipal WWTP  
<https://www.youtube.com/watch?v=3B0yOFFdLyo>



Video: HUBER Belt Thickener DrainBelt - here at a municipal WWTP  
<https://www.youtube.com/watch?v=6pcHf8aJpQ>



Animation: Function and components of new HUBER Screw Press Q-PRESS® 620, 800  
<https://www.youtube.com/watch?v=t1dSGJYtCk>



Video: HUBER Screw Press Q-PRESS® - here at a municipal WWTP  
<https://www.youtube.com/watch?v=5VsPNKbkJyA>



Video: HUBER Sludge Turner SOLSTICE®  
<https://www.youtube.com/watch?v=QdWahrCOKug>



Video: Solar Active Dryer SRT at STP Gunstett  
<https://www.youtube.com/watch?v=JqflpsD16VM>



Video: Solar Active Dryer SRT at STP Marktberg!  
<https://www.youtube.com/watch?v=Zajln8OGxpk>



Animation: HUBER Sludge Turner SOLSTICE® for large quantities of sludge  
<https://www.youtube.com/watch?v=T-FUbjSzMZE>



Animation: HUBER Sludge Turner SOLSTICE®  
<https://www.youtube.com/watch?v=gOkKQhmA4uM>



Video: Sewage Sludge Drying with HUBER Belt Dryer BT  
<https://www.youtube.com/watch?v=6VTJ1ex10bQ>



Video: HUBER Belt Dryer BT for high efficiency sewage sludge drying  
[https://www.youtube.com/watch?v=PN7G-vk\\_r3c](https://www.youtube.com/watch?v=PN7G-vk_r3c)



Video: HUBER Belt Dryer BT and a municipal STW  
<https://www.youtube.com/watch?v=7DzeODjrGXg>

S.à r.l. au capital de 75 000 EUR – RCS Colmar B389416231 – APE 4669B – Siret 389 416 231 00030 – N° TVA FR 08 389 416 231

Adresse :  
10 A allée de l'Europe  
67140 BARR  
FRANCE

Télécopie :  
+ 33 (0) 3 88 08 14 98  
e-mail : [info@huber.fr](mailto:info@huber.fr)  
internet : [www.huber.fr](http://www.huber.fr)

Téléphone administration : + 33 (0) 3 90 57 49 10  
Téléphone commercial : + 33 (0) 3 88 08 51 52  
Téléphone réalisation : + 33 (0) 3 88 08 59 60  
Téléphone SAV : + 33 (0) 3 90 57 49 09

BNP PARIBAS : BIC BNPAFRPPSTR  
IBAN FR76 3000 4004 8700 0100 0723 125  
CIC BANQUE CIAL : BIC CMCIFRPP  
IBAN FR76 3008 7330 8000 0428 2740 114

---